

# LILLIPUT®

Integrated 8" HDMI/VGA capacitive touch monitor  
for variety of filed applications

# 8" 1000 NITS HIGH BRIGHTNESS

## INDUSTRIAL-GRADE TOUCH MONITOR



### OPTIONAL IP65 FRAME

Features with HDMI extension cable and IP65 rating housing.



1000 Nits



Optical bonding



10-Point Touch



Auto Dimming



AG+AF



LED Life Time



-25°C~75°C

Model: **819/C** | **819/T**  
Without touch | With touch

# 1000 NITS

Touch monitor features with **1000 nits** high brightness for outdoor sunlight readable.



## 8 INCH

8" Industrial-grade touch screen panel with 1024×768 resolution.



## 1000 NITS

The screen can still be seen clearly in outdoor use without hindering operation.



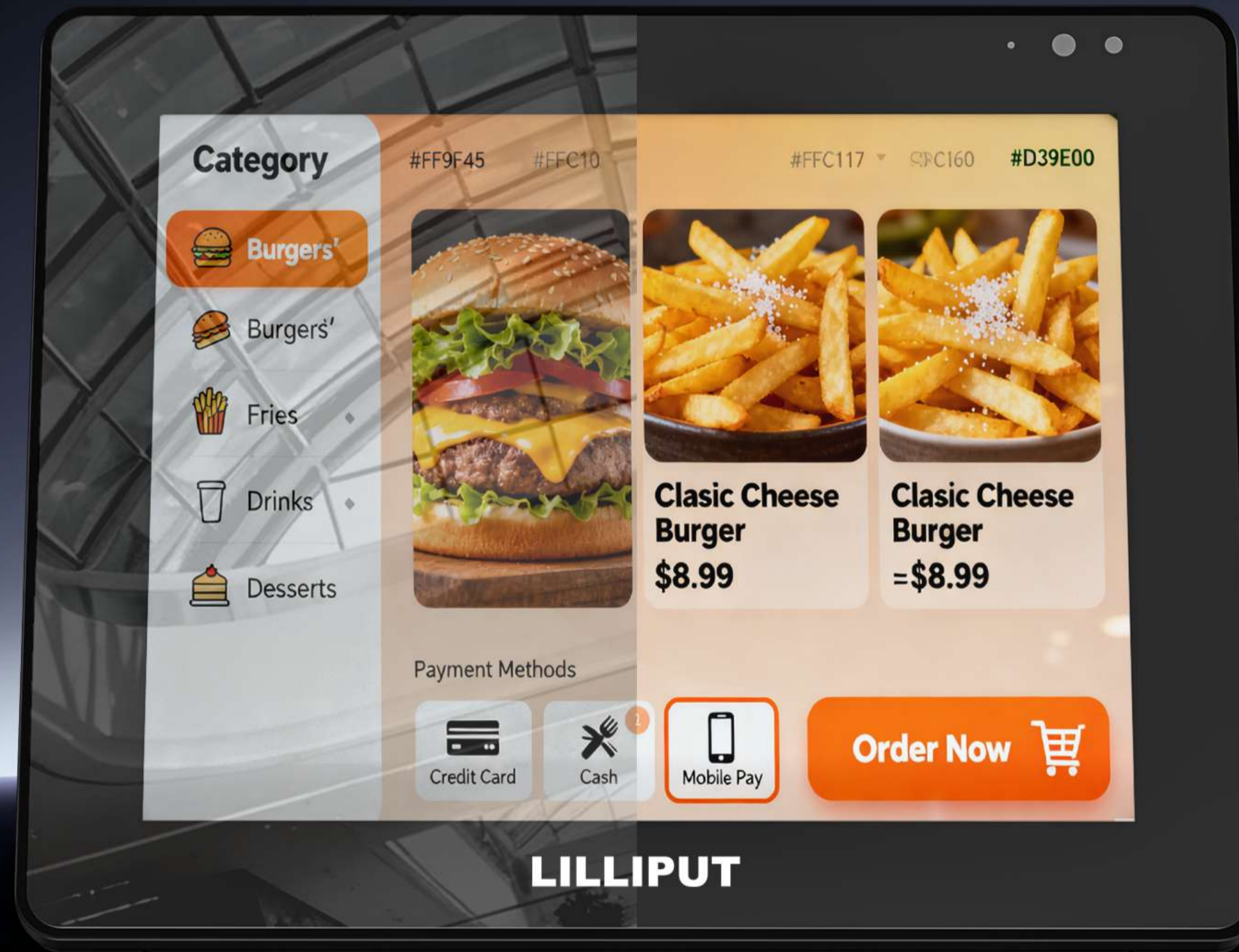
## AUTO DIMMING

Depending on the intensity of ambient light, the brightness of screen will be automatically adjusted to save power.

# OPTICAL BONDING

SCREEN WITH OPTIONAL AG AND AF COATING

NO ANTI-GLARE



ANTI-GLARE



## OPTICAL BONDING

Remove the air layer between the LCD and glass, prevent dust and moisture from damage LCD panel.



## ANTI-GLARE

Anti-glare screen can reduce reflective glare in the environment.



## ANTI-FINGERPRINT

Anti-fingerprint screen can reduce fingerprints on the surface of screen panel.

# 50000H

## LED PANEL LIFE TIME

Hardware engineers selected high quality industrial-grade LCD screen through multiple tests, giving the monitors an exceptional working life.



# CUSTOMIZABLE SENSITIVITY TOUCH

COMPATIBLE WITH VARIOUS GLOVES

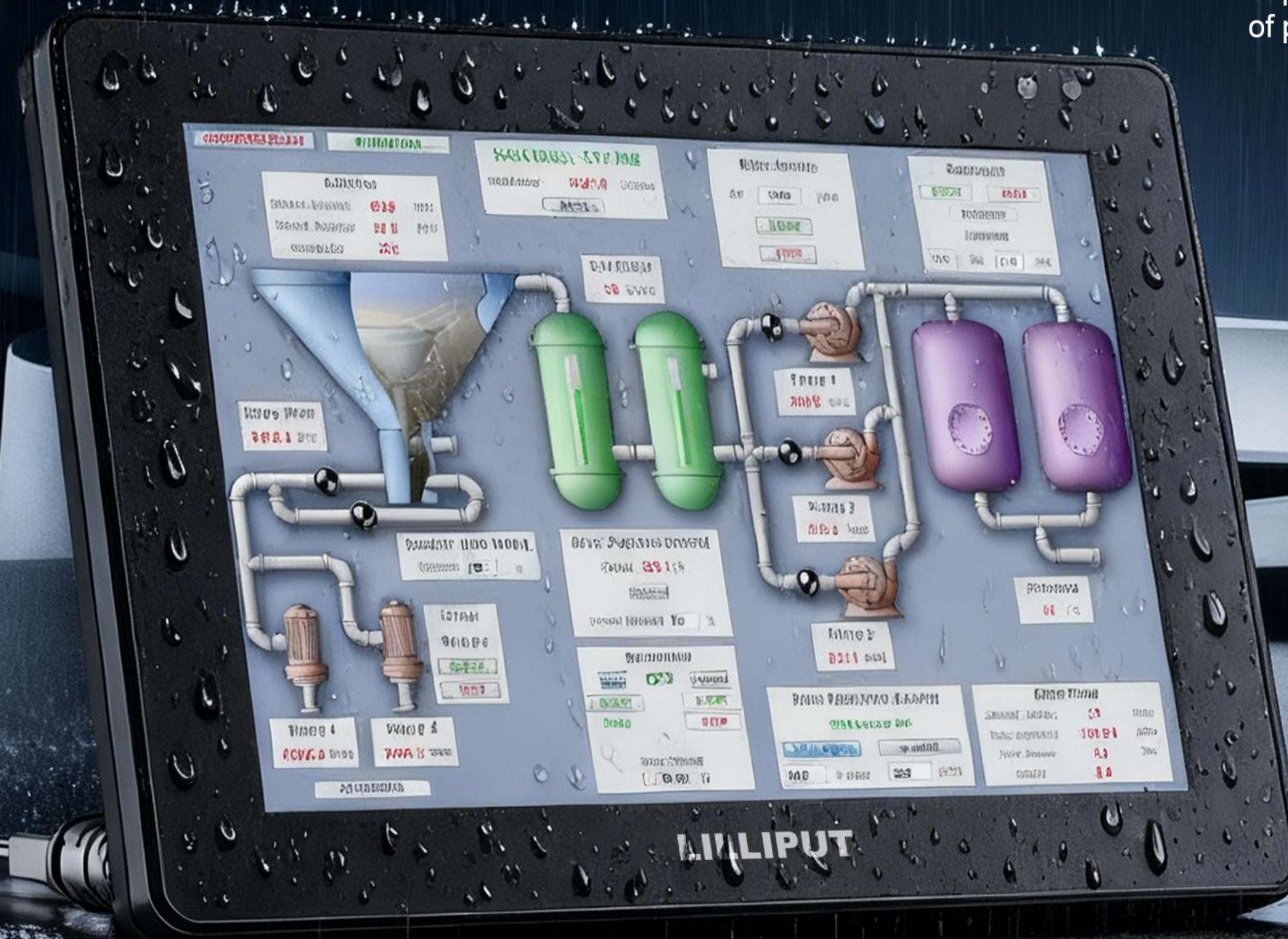
Operating with wet hands or a wide range of gloves, such as rubber gloves, latex gloves and PVC gloves.



# IP65 RATING/NEMA 4

FOR OPTIONAL IP65 FRAME

Front panel of the monitor is designed to carry IP65 rating and NEMA 4 degree of protection which offer complete protection against particles, and a good level of protection against water projected by nozzle against monitor from any direction.

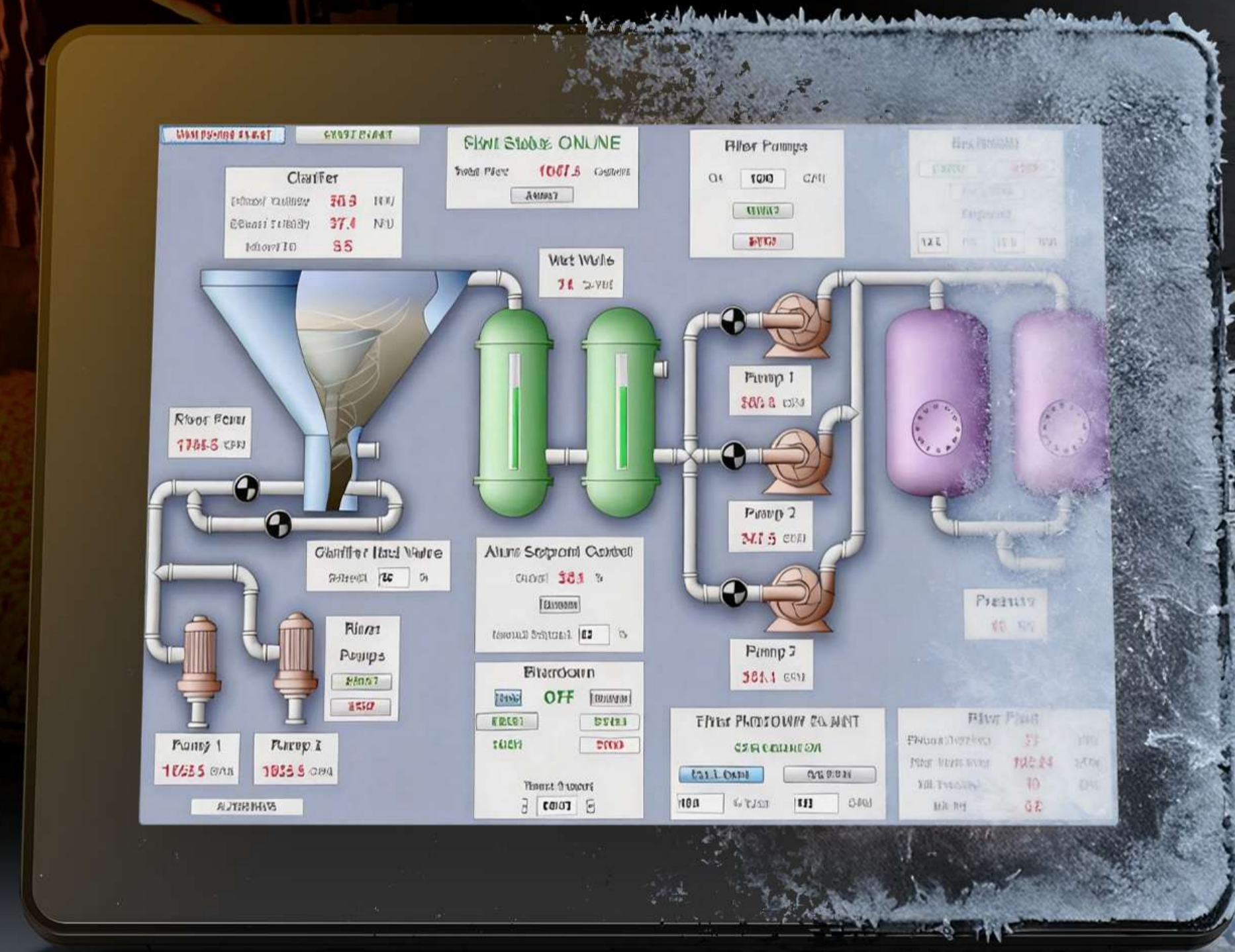


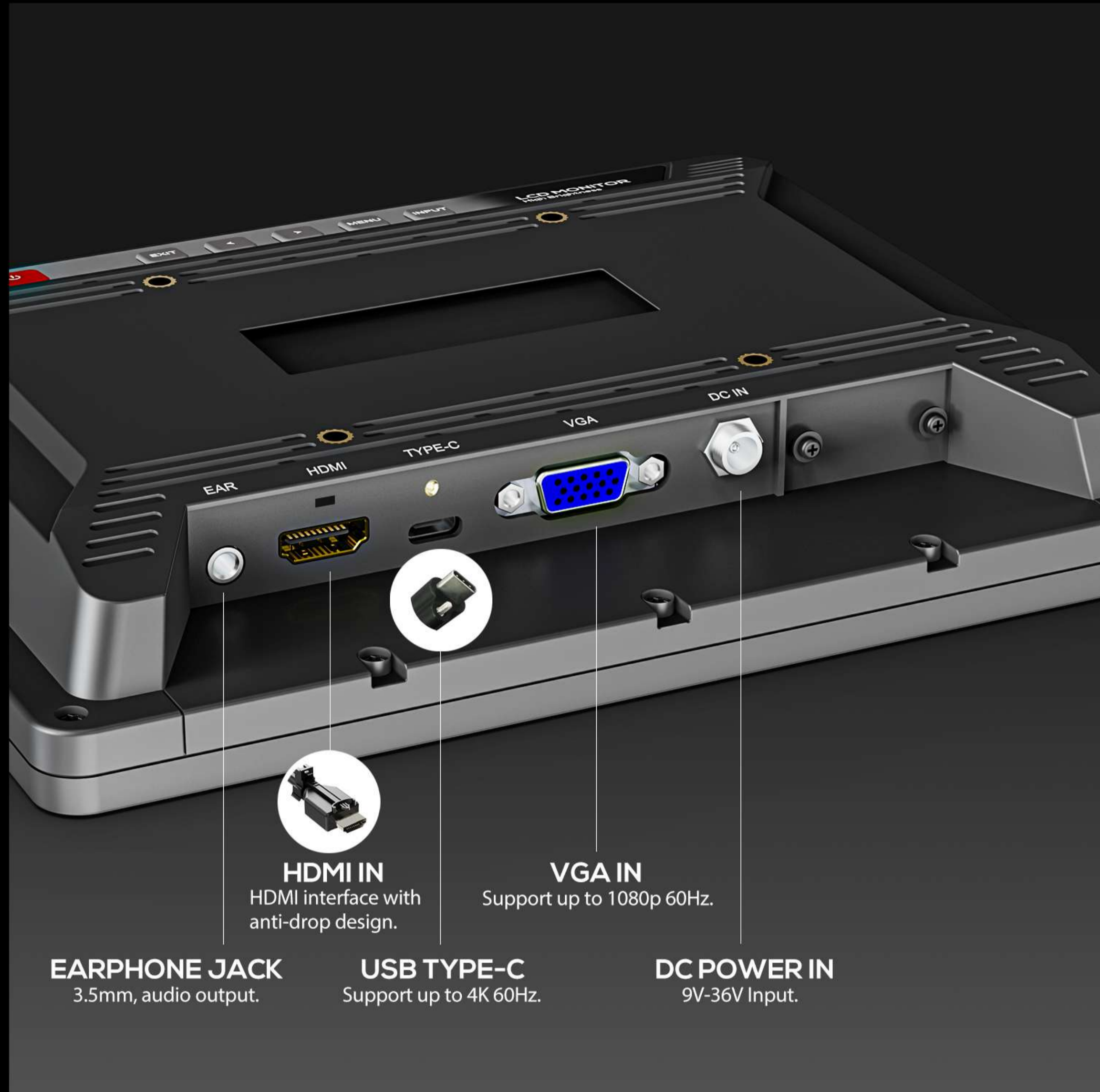
75°C

# ALL-WEATHER DISPLAY

Stable performance in extreme environments of -25°C to +75°C. The monitor can operate smoothly in extremely hot/cold environments.

-25°C





# OPTIONAL IP65 FRAME

WITH HDMI EXTENSION CABLE

Rugged extension cable designed for body waterproofing & dustproofing, with HDMI, USB and DC ports.



**MARITIME**



**IN-VEHICLE**



**ROBOT**



**HMI**



**VESA 75MM BRACKET**

Quality folding VESA 75mm bracket that can be placed on a table or fixed to ceiling.

# SPECIFICATIONS

MODEL NO.:

819/C

819/T

819/C

819/T

STRUCTURE		Standard		With Optional IP65 Frame	
DISPLAY	Touch Screen	-	10-point PCAP	-	10-point PCAP
	Panel	8" LCD			
	Physical Resolution	1024×768			
	Aspect Ratio	4:3			
	Brightness	1000 nits			
	Contrast	800:1			
	Viewing Angle	170°/ 170°(H/V)			
	LED Panel Life Time	50000h			
	Optional Coating	Anti-glare, anti-fingerprint			
INPUT	HDMI	1		1	
	VGA	1		-	
	USB	USB Type-C (For touch + video signal)		USB Type-A (For touch only)	
SUPPORTED FORMATS	HDMI	2160p 24/25/30, 1080p 24/25/30/50/60, 1080i 50/60, 720p 50/60...			
	VGA	1080p 24/25/30/50/60, 1080pSF 24/25/30, 1080i 50/60, 720p 50/60...			
	USB Type-C	2160p 24/25/30/50/60, 1080p 24/25/30/50/60, 1080i 50/60, 720p 50/60...			
AUDIO IN/OUT	Speaker	1			
	HDMI	Available			
	Ear Jack	3.5mm - 2ch 48kHz 24-bit		-	
POWER	Input Voltage	DC 9-36V			
	Power Consumption	≤11W (12V)			
ENVIRONMENT	Operating Temperature	-25°C~75°C			
	Storage Temperature	-35°C~85°C			
	IP Rating	IP65 Rating for front panel		IP65 Rating for whole body	
DIMENSION	Weight	750g		780g	
	Dimension(LWD)	205mm × 164.5mm × 33mm			



Standard

Optional IP65 Frame

# ACCESSORIES

## STANDARD



12V 2A Power Adapter



HDMI A-A Cable



USB-A - C Cable (For Touch)



USB-C - C Cable (With Screw)

## OPTIONAL IP65 FRAME



12V 2A Power Adapter



HDMI A-A Cable  
(HDMI Ver.)



USB-A - A Cable (For Touch)

## OPTIONAL



Remote Control



VESA 75mm Bracket



HDMI Cable Lock

