

LILLIPUT®

PGM/PVW

HDMI 2.0
3G-SDI

1000 NITS
High brightness

Triple Vertical

LUT
LUT out
SDI&HDMI

27" 1000 NITS LIVE STREAM MULTIVIEW MONITOR

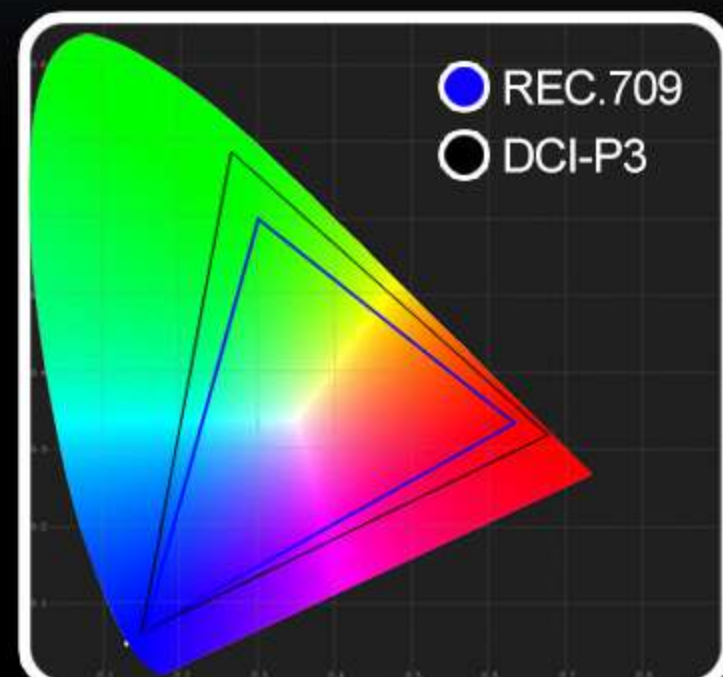
Multiview monitor with PGM and LUT loop-out, ideal for short video production, live streaming, and multi-camera workflows.

MODEL NO.: PVM270S



Sunlight Readable Screen

The 1000 nits high brightness screen not only provides director with accurately colors outdoors, but also combines with the HDR algorithm to deliver an unparalleled quality picture.



COLOR SPACE

100% Rec.709 Color Space.



COLOR CALIBRATION

A specific calibration to reproduce the colors of Color calibration.



3D LUT

Built-in 3D-LUT, featuring 17 default logs and 6 user logs.

Multiview Function

Seven professional monitoring modes including Single, Dual, Triple, Triple Portrait, and Quad. Switch freely between landscape and portrait. Take full control of multi-camera setups and let creativity flow.



Triple Portrait



Vertical



Triple



Quad-Split Multiview



Dual Views



PBP



Landscape



PGM

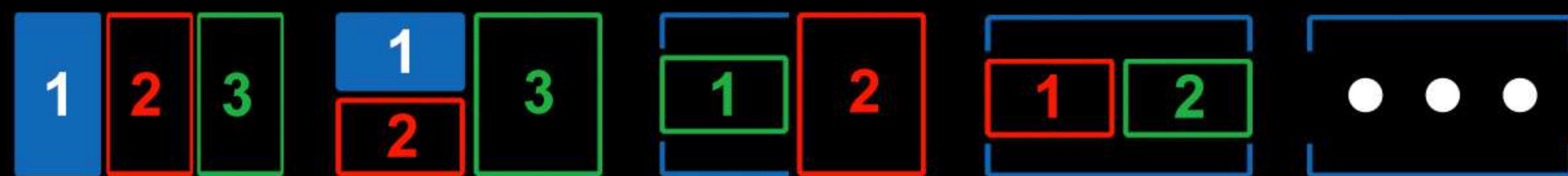
PVW



PVW/PGM Videos Switch

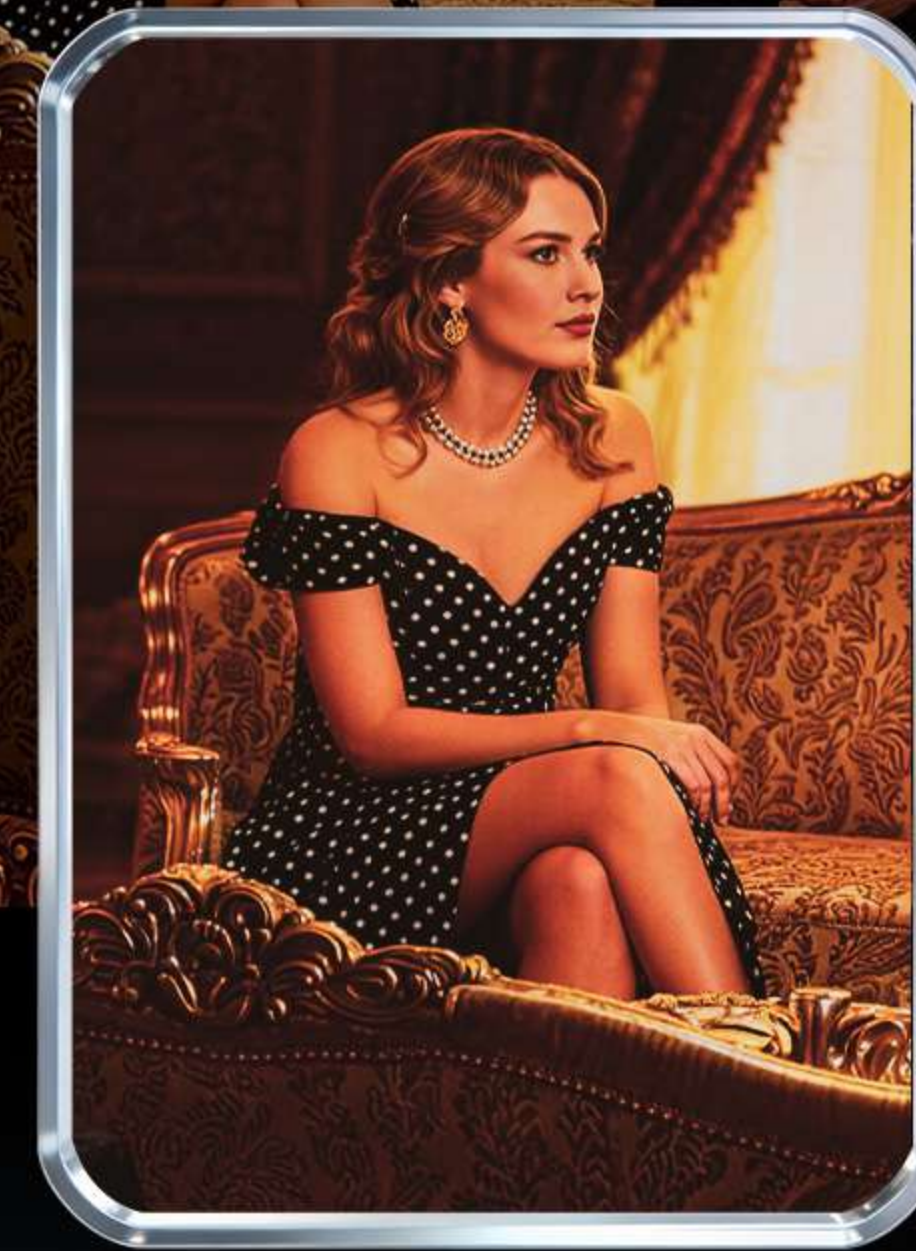
SDI & HDMI Signals Can Be Output Via PGM Interfaces

Multi camera video sources can be set up as Preview source and Program source for quick switching source of live streaming to video capture via shortcuts, and finally to Youtube, Skype, and more platforms.



3D LUT LOAD

Comes with 17 built-in LUTs and 6 custom LUTs. Import user LUTs via USB for pro-level color grading





SDI LOOP & ASSIGNABLE OUT

Features 2 SDI inputs and 2 SDI outputs. A dedicated SDI loop-out and an assignable SDI output for PGM or HDR/LUT-applied signals.



HDMI LOOP / PGM / LUT OUT

Features 3 HDMI inputs and 1 HDMI output. The HDMI output can be switched between input loop-through, PGM, or HDR / LUT-applied signals.

3D LUT APPLIED



LOOP OUT



LUT OUT



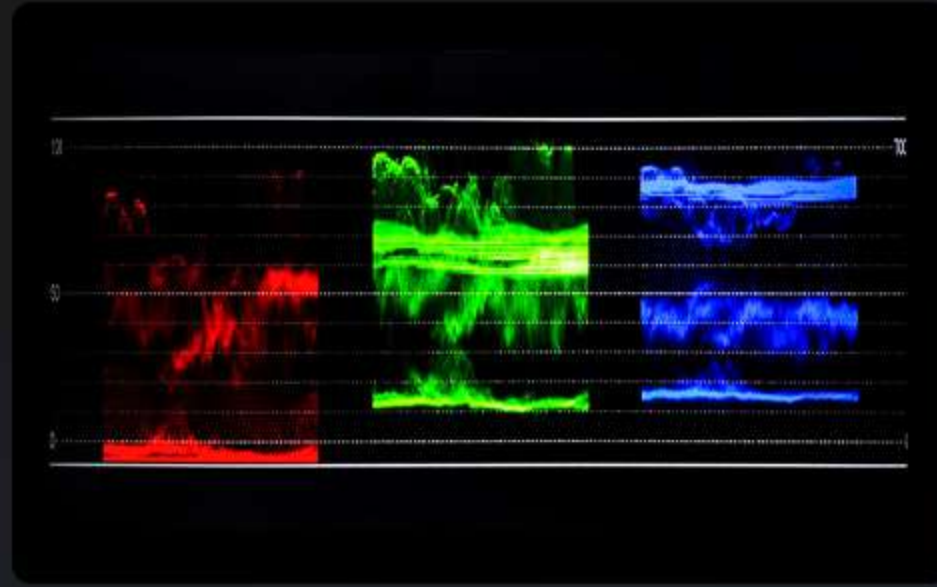
Note: 3D LUT/HDR signal out support up to 1080p 60Hz.

3D LUT OUTPUT

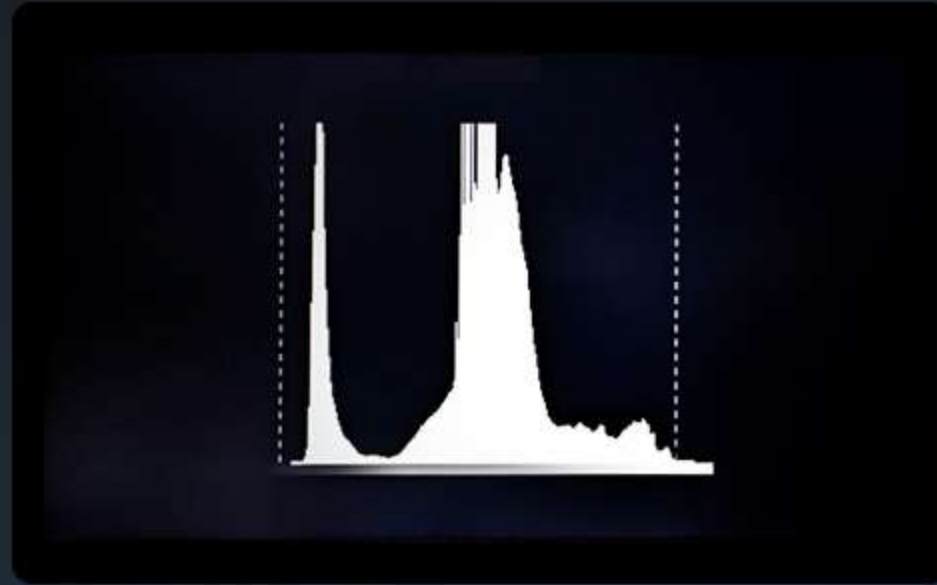
Clean Loop or LUT-Applied Output via SDI & HDMI

Supports 3D LUT monitoring and SDI/HDMI LUT output, delivering color-graded images directly to external devices.

Ideal for live events, film shoots and on-set grading.



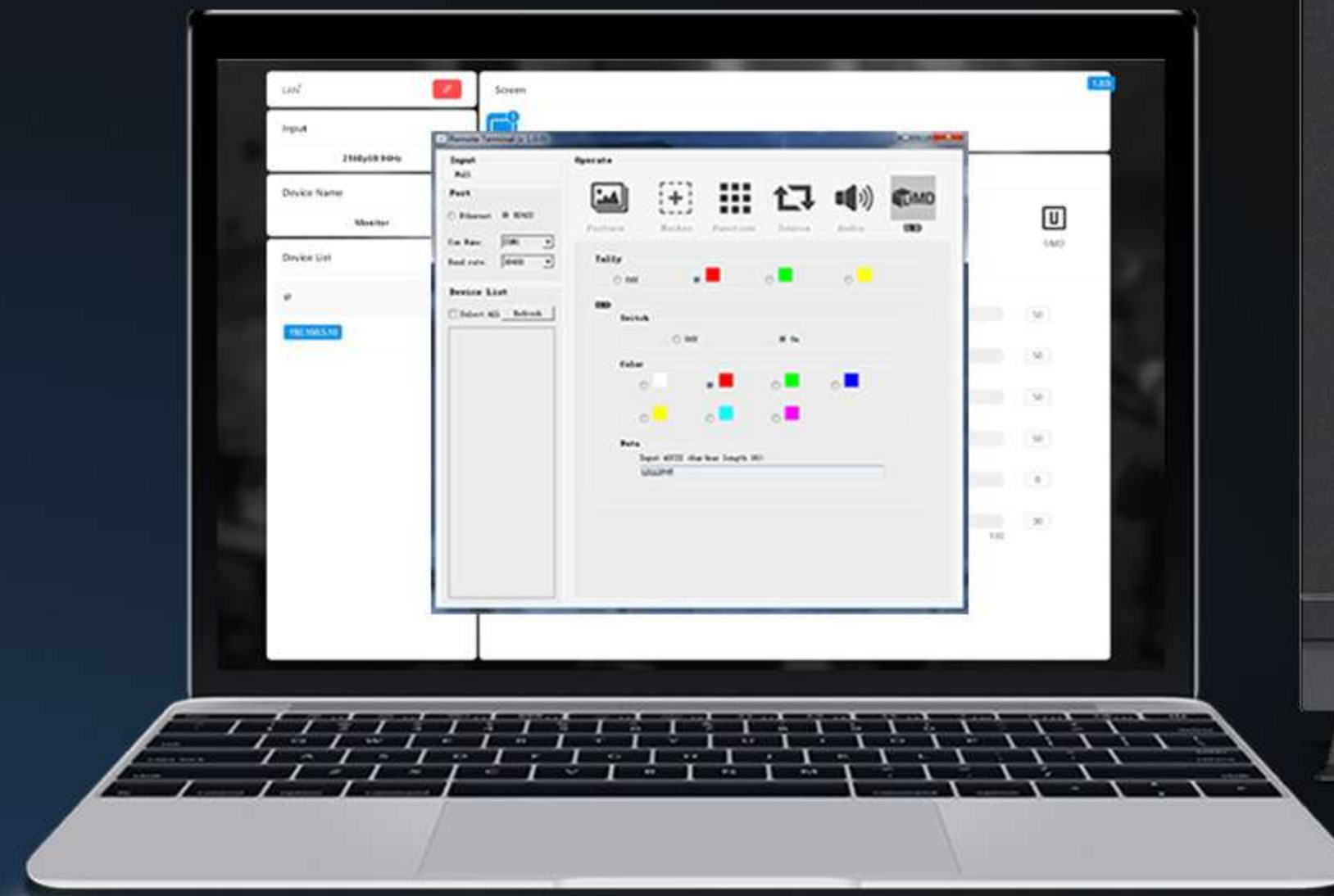
Full Screen Waveform



Full Screen Histogram



Full Screen Audio



















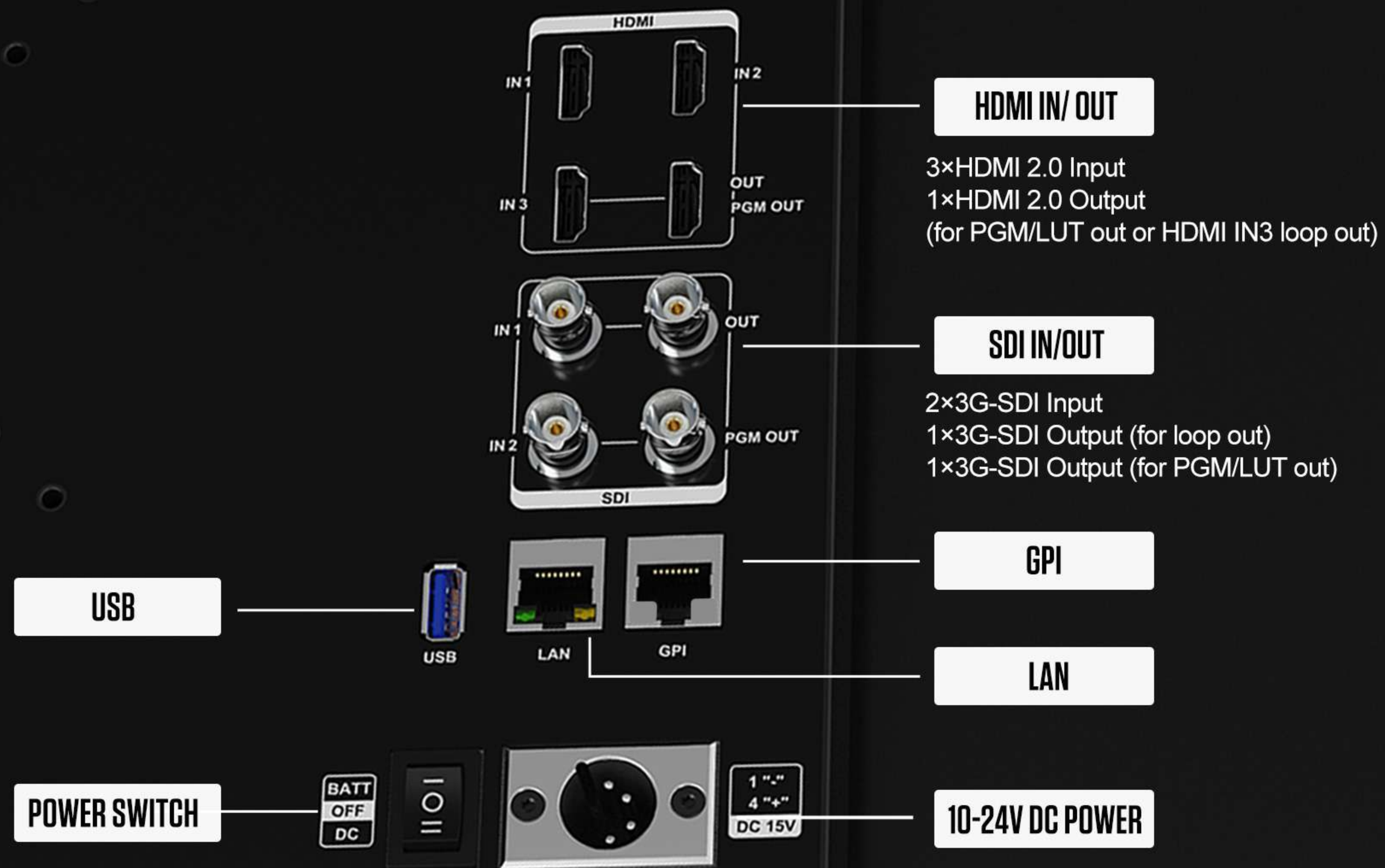
Remote Control Application

Supports remote monitor control by connecting a computer through the LAN port.

Camera Assist Functions

Plenty of auxiliary functions for taking photos and making movies, such as Full screen tools, waveform, HDR, false color, peaking, UMD and time code...

- | | | | | | | | |
|---|---|---|---|---|---|---|---|
|  |  |  |  |  |  |  |  |
| Color Temp | Color Space | 3D-LUT | HDR | Gamma | UMD | LAN | Waveform |
|  |  |  |  |  |  |  |  |
| Histogram | Exposure | Peaking | False color | Check field | Marker | Freeze | Level meter |



Interfaces & Battery Plate

HDMI2.0, 3G-SDI Input & Output

The back of broadcast monitor is equipped with VESA 75mm/100mm installation options, which is compatible with the installation of most light stands and battery plates. The battery plate can be selected from V-lock battery plate and Anton Bauer battery plate.



90° Flip Portable suit case

Portable suit case with sturdy side feet for vertical placement. Perfect for desk use and vertical short films, enabling easy upright monitoring.



Mountable Gears

Supports 1/4" and 3/8" interfaces, compatible with most brackets on the market.



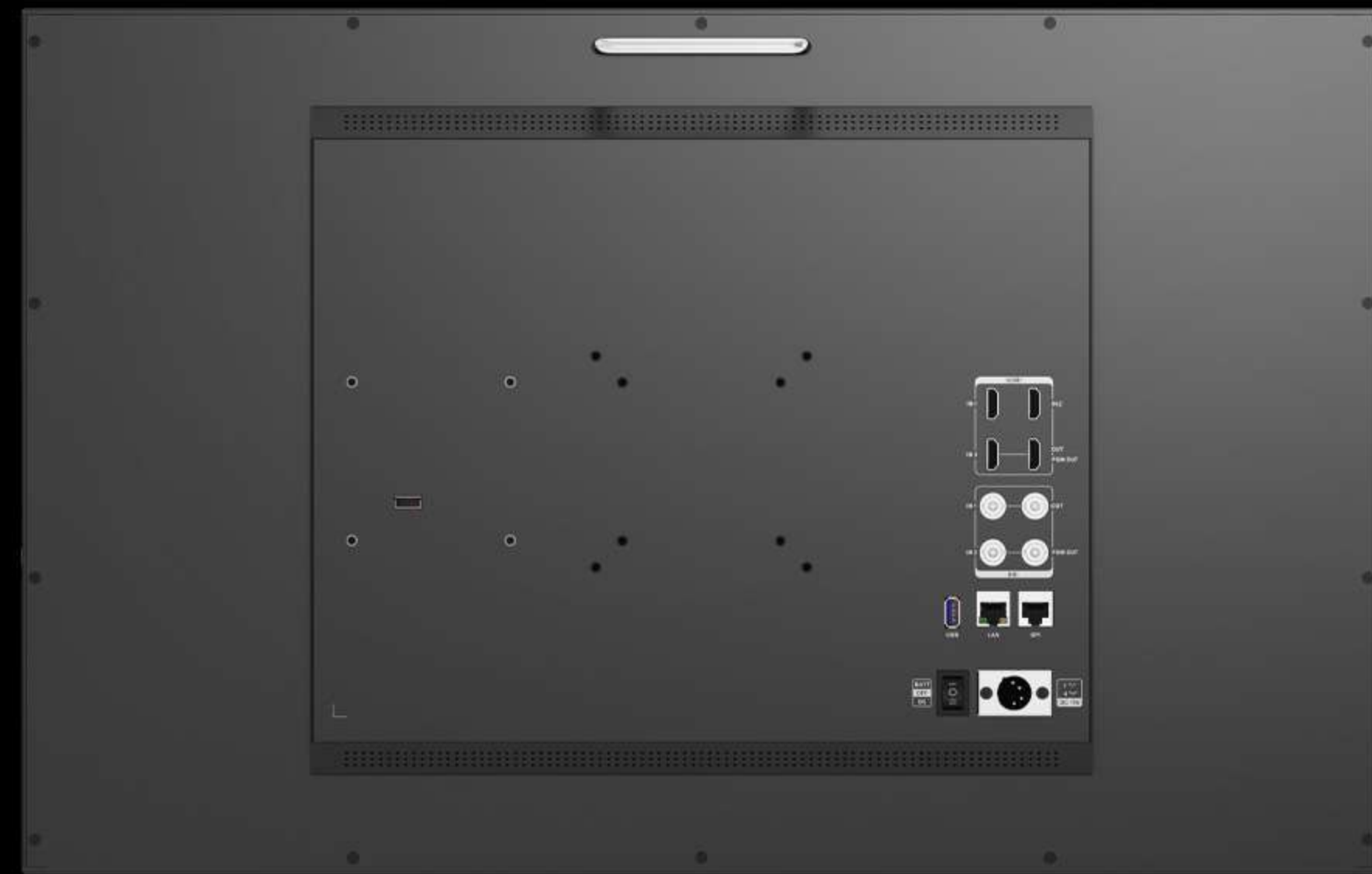
F1-F3 & Knob Shortcuts

Press F1-F3 to quickly call up functions. Long press F1-F3 or knobs to customise different functions.



APPLICATIONS

Built for short drama production, live streaming, on-set color grading, multi-camera workflows, and outdoor shooting, ensuring precise image control in any environment.



SPECIFICATIONS

| | | |
|-----------------------------------|---------------------------|--|
| DISPLAY | Panel | 27" |
| | Physical Resolution | 1920*1080 |
| | Aspect Ratio | 16:9 |
| | Brightness | 1000 cd/m ² |
| | Contrast | 1000:1 |
| | Viewing Angle | 178°/178° (H/V) |
| | HDR | ST2084 300/1000/10000/HLG |
| | Supported Log Formats | SLog2 / SLog3 / CLog / NLog / ArriLog / JLog or User... |
| | Look up Table(LUT)support | 3D LUT (.cube format) |
| | VIDEO INPUT | SDI |
| HDMI | | 3×HDMI 2.0 |
| VIDEO OUTPUT | SDI | 1×3G-SDI (for loop out) 1×3G-SDI (for PGM/LUT out) |
| | HDMI | 1×HDMI 2.0 (for loop/PGM/LUT out) |
| SUPPORTED FORMATS | SDI | 1080p 24/25/30/50/60, 1080pSF 24/25/30, 1080i 50/60, 720p 50/60... |
| | HDMI | 2160p 24/25/30/50/60, 1080p 24/25/30/50/60, 1080i 50/60, 720p 50/60... |
| | PGM/LUT Out | 1080p 24/25/30/50/60 |
| AUDIO (48kHz PCM Audio) | SDI | 2ch 48kHz 24-bit |
| | HDMI | 8ch 24-bit |
| | Ear Jack | 3.5mm |
| | Built-in Speakers | 2 |
| REMOTE CONTROL | Input Voltage | DC 10-24V |
| | Power Consumption | ≤58W (10V) |
| | Compatible Batteries | V-Lock or Anton Bauer Mount |
| | Input Voltage(battery) | 14.8V nominal |
| POWER | Operating Temperature | 0°C~50°C |
| | Storage Temperature | -20°C~60°C |
| ENVIRONMENT | Dimension(LWD) | 644mm × 409.1mm × 55.3mm |
| | Weight | 8.8kg |

Note: Due to constant effort to improve products and product features, specifications may change without notice.

STANDARD ACCESSORIES



15V 4.8A Power Adapter



Base Brackets



V-Mount / AB Battery Plate

VESA Mount Plate

OPTIONAL ACCESSORIES



Sunshade



Suitcase

